

WISA[®]-Hexa

WISA-Hexa is a plywood panel coated with brown or grey film and imprinted with a hexagonal pattern. It is intended for use as flooring in the transport industry ie. delivery vans and horseboxes and building applications such as warehouse floors and stage platforms. WISA-Hexa is a suitable choice as a flooring panel where slip resistant and decorative looks are needed.

Base panel

Birch plywood made solely from birch (hardwood) veneers.

Bonding

Phenolic resin cross-bonded weather resistant gluing according to EN 314-2/class 3.

Surface

Face: Brown phenolic resin film with a 10 mm diameter hexagonal pattern.

Grey UV-resistant coating with a 10 mm hexagonal pattern.

Reverse: Smooth phenolic moisture barrier with imprinted text "WISA Special Plywoods".

Other reverse side coatings available upon request.

Edge protection: Acryl-based paint.

Machining

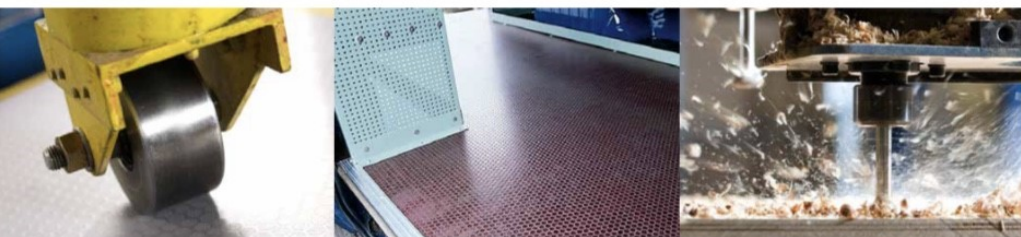
Edge and face machining by CNC router available upon request

Thicknesses and weights

Nominal thickness (mm)	Number of plies	Thickness (mm)	Weight (kg/m ²)	Maxi panels thickness (mm)
9	7	8.8 - 9.5	6.5	8.3 - 9.0
12	9	11.5 - 12.5	8.5	11.0 - 12.0
15	11	14.3 - 15.3	10.5	13.8 - 14.8
18	13	17.1 - 18.1	12.3	16.6 - 17.6
21	15	20.0 - 20.9	14.6	19.5 - 20.5
24	17	22.9 - 23.7	16.6	-
27	19	25.2 - 26.8	18.4	-
30	21	28.1 - 29.9	20.7	-

Moisture content 8-10%.





Distributed by



Universal Plywoods

Responsible Timber Specialists

www.universalply.com

sales@universalply.com

Panel sizes

Standard dimensions: 1000 x 2500/3000 mm
1220 x 2440 mm
1250 x 2500 mm
1525 x 2500/3050 mm
The largest standard size 1525 x 3660 mm

Maxi panels: 1800 x 3000 mm
2000 x 3000 mm
The largest scarf-jointed size 4000 x 2000 mm

Size tolerances: < 1000 mm ± 1 mm
1000 - 2000 mm ± 2 mm
2000 - 6000 mm ± 3 mm

Squareness tolerance: ± 1 mm / 1000 mm

Properties of panel surface

Wear resistance value (Taber DIN 53799) average 570 cycles.
Rolling test value (SS 923502) 1750 cycles
Improved water resistance through coating.
Chemical resistance: endures mild alkalis.
Direct exposure to sunlight may accelerate the ageing and colour alterations of the surface.
Limited suitability to exterior conditions with grey coating.

Strength values

As per the Handbook of Finnish Plywood.

For further information on installation, maintenance, disposal, environmental matters etc. please contact your supplier or visit www.wisaplywood.com.



www.wisaplywood.com

www.upm.com

UPM policy is one of continuous development. We reserve the right to amend specifications without notice or obligation.